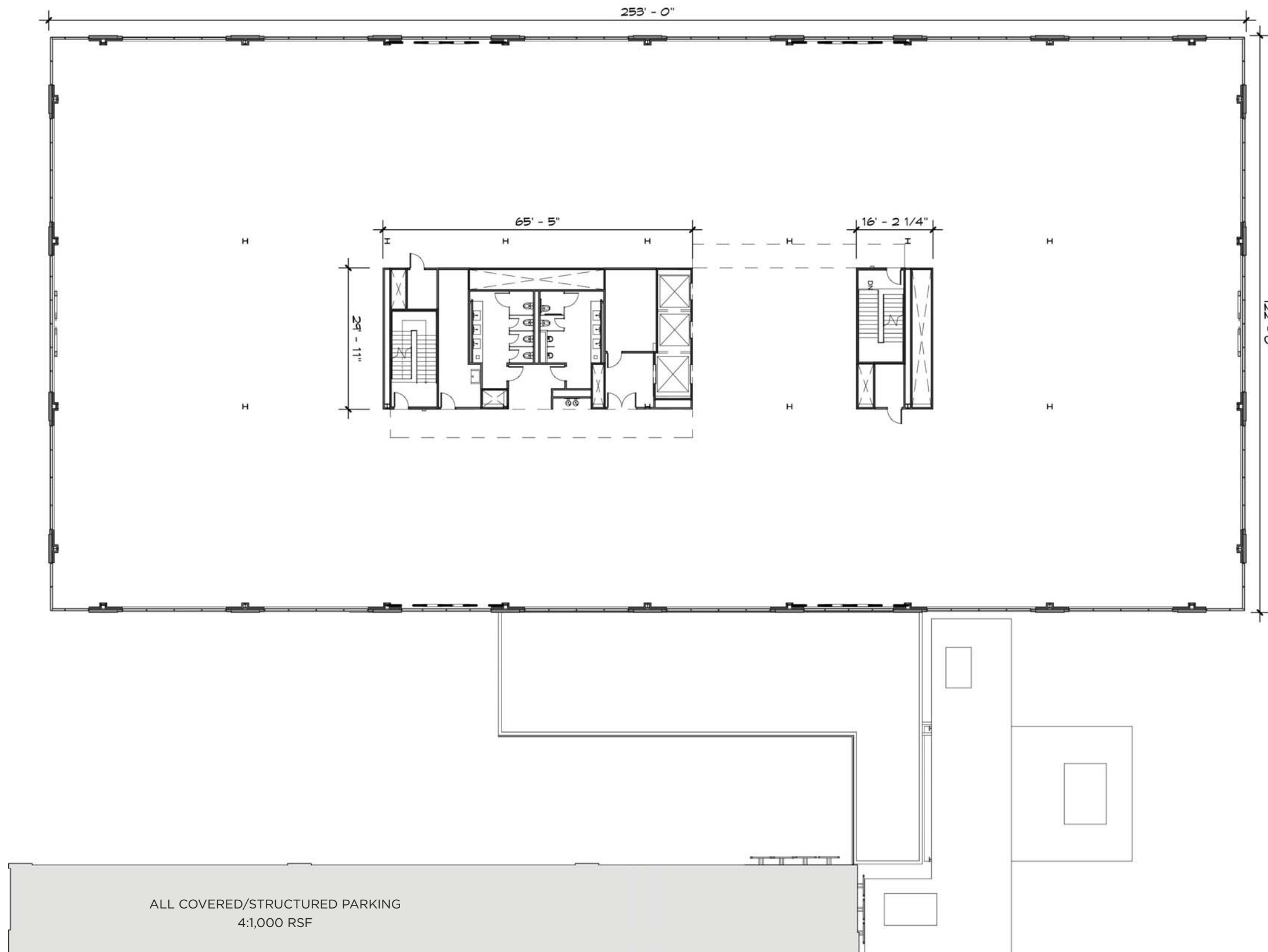


# FLOOR PLAN - LEVEL 3: 29,470± RSF

FULL OF SMART DESIGN SURPRISES.



# VISTA

CORPORATE CENTER

## TRUE CLASS A+

THE SPACE TO THINK DIFFERENTLY.

[VISTA-SA.COM](http://VISTA-SA.COM)

13805 IH-10 W  
SAN ANTONIO, TX 78249

For information about leasing opportunities at VISTA CORPORATE CENTER please call 210.341.1344.

**RUSSELL T. NOLL, CCIM, CPM®**  
russell.noll@transwestern.com

 **TRANSWESTERN®**  
EXCLUSIVE BROKER

IN CONJUNCTION WITH DRAKE COMMERCIAL GROUP



The information provided herein was obtained from sources believed reliable; however, Transwestern makes no guarantees, warranties or representations as to the completeness or accuracy thereof. The presentation of this property is submitted subject to errors, omissions, change of price or conditions, prior sale or lease, or withdrawal without notice.  
Copyright © 2015 Transwestern.